

# COMPANY PROFILE



We provide Electrical Engineering and Project Management & Development services for clients in the Industrial, Utility, Public and Private sectors

INTELLIGENT • PROJECTS

## TABLE OF CONTENTS

---

<b>INTRODUCTION .....</b>	<b>3</b>
<b>VISION, MISSION AND VALUES .....</b>	<b>4</b>
<b>QUALITY MANAGEMENT .....</b>	<b>5</b>
<b>COMPANY STRUCTURE - ORGANOGRAM .....</b>	<b>5</b>
<b>PROFESSIONAL SERVICES .....</b>	<b>6</b>
Building Services .....	6
Renewable Energy .....	6
Electrification.....	6
Project Development.....	7
Reticulation (11kV – 33kV) .....	7
Project Execution Management .....	7
Distribution and Sub-Transmission (33kV – 132kV) .....	8
Mining and Industry .....	8
Other Supporting Engineering Services .....	8
<b>CLIENT PORTFOLIO .....</b>	<b>9</b>
<b>ACCREDITATION AND MEMBER ASSOCIATIONS .....</b>	<b>10</b>
<b>COMPANY INFORMATION .....</b>	<b>10</b>

## INTRODUCTION

---

Intellipro Consulting was established in 2007 and is a dynamic engineering consulting company specializing in the management and engineering of electrical engineering projects from inception to completion. Intellipro provides total quality, cost effective and timely solutions throughout the life cycle of each project or any phase thereof.

When founding Intellipro Consulting we envisioned a company that will serve as a trusted, long-term partner with private and public sector clients.

Since its foundation, Intellipro Consulting has built a portfolio of high quality projects for various clients throughout the industry.

With professionalism and a strong work ethic, and exceptional client service and relations, our extensive Electrical Engineering and Project Management knowledge and experience is applied to delivering optimum solutions to ensure our clients' projects are of the best quality possible.

---



## VISION, MISSION AND VALUES



### OUR VISION

To be a leader and preferred service provider in the Engineering and Project Management environment


### OUR MISSION

To provide a quality, effective and efficient consulting, and management service to the total satisfaction of our clients in the Industrial, Utility, Private and Public sectors, by:

- Understanding our clients and their requirements
- Providing a quality service beyond expectation
- Continuously improving our business performance and processes
- Consistently obtaining new knowledge in technology and management methodologies
- Creating a satisfying but challenging work environment to all employees

### OUR VALUES

The core values that we aspire to, and which define our culture are:

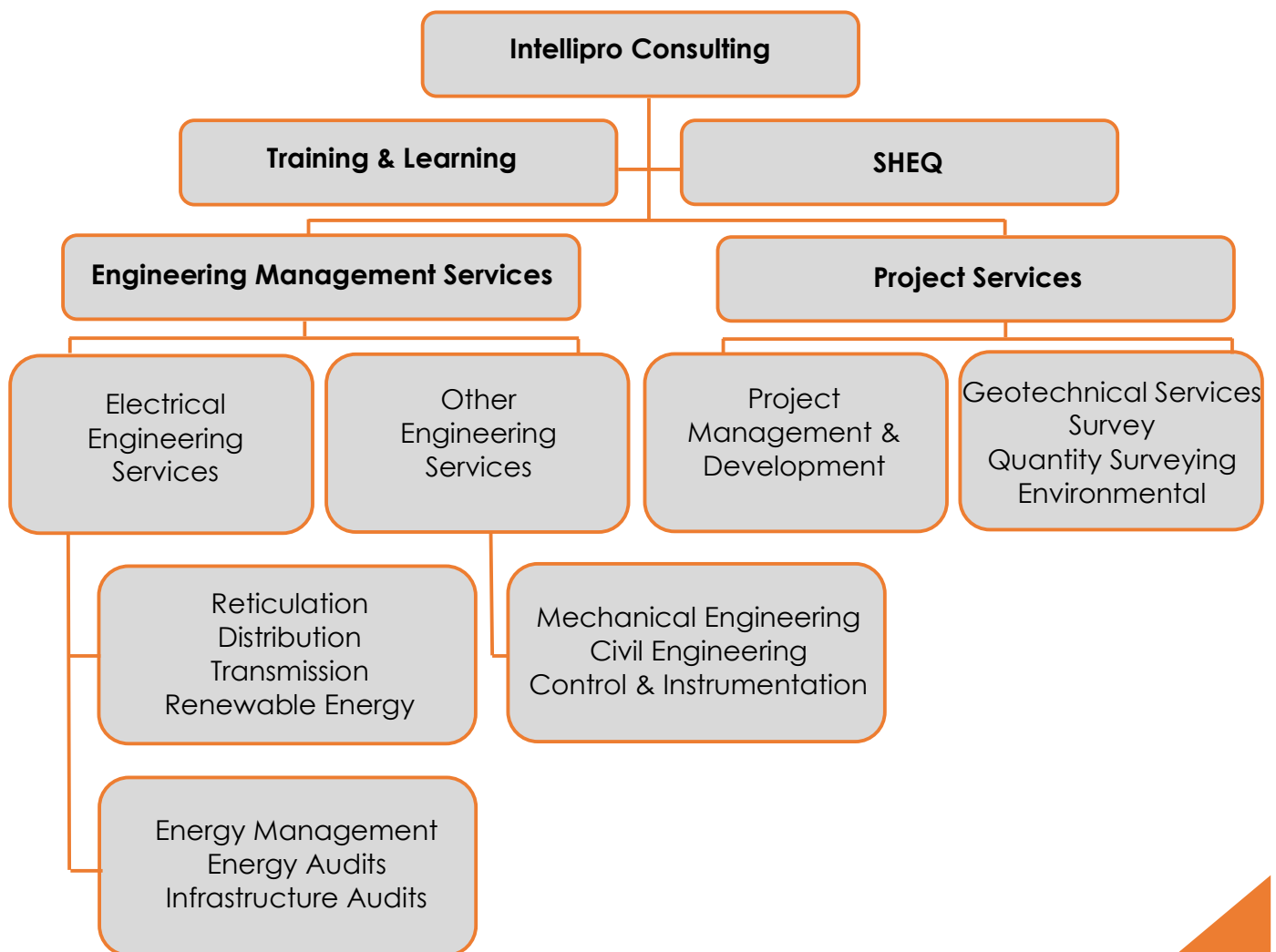
- **Integrity**
    - Uncompromising integrity in the conduct of business and the promotion of trustworthiness, transparency, fairness, and respect for others
  - **Excellence**
    - Delivery of service excellence through quality and passion and the ability to add value through innovation and superior performance
  - **Commitment**
    - Continuous commitment to our clients and their interests
  - **Empowerment**
    - The empowerment of all employees by encouraging participation, creativity, and continuous and appropriate personal development
- 

## QUALITY MANAGEMENT

The standard of service is achieved through a multi-disciplined and integrated approach and consists of:

- A Business Management System (BMS), which includes a strong focus on solid business policies, logical processes, and innovative procedures
- A Quality Management System (QMS), which complies with the international ISO 9001:2015 standard
- Intellipro Consulting strives to continuously improve on these systems by adopting and integrating well-established programmes from world-renowned industry leaders

## COMPANY STRUCTURE - ORGANOGRAM



## PROFESSIONAL SERVICES

### BUILDING SERVICES

- Building automation
- Lighting design
- Earthing and lightning protection design
- LV and MV reticulation design
- Electrical installation audits



Zimbabwe Beitbridge Border Post  
Upgrade (Raubex Building)

### RENEWABLE ENERGY

- Cost Estimates
- Project Development of IPP integration projects
- Grid connection studies
- Grid code studies
- Line design (Self build projects)
- Substation design (Self build projects)
- Project Management
- Technical Support



Cross Mabale 5MW PV Plant (Solgas)

### ELECTRIFICATION

- Town electrification design
- Electrification strengthening
- Electrification refurbishment
- Audits
- Transformer zone design
- MV line design
- LV Strengthening projects



Consultants Panel  
(Eskom Distribution – Northern Region)



## PROJECT DEVELOPMENT

- Project Development Management overseeing the project development from initial planning through the feasibility and design stages up to the project being released for execution and handed over to construction management
- Development of Projects through the concept and definition phases by integrating and interfacing with various project stakeholders on a multi-disciplinary project team
- Project Management activities across the 9 areas of the project management body of knowledge
- Project Development Readiness Assessments
- Establishing customer requirements and converting it to project requirements
- Preparation of project contracting strategies and project cost estimates
- Project Development and Project Execution schedules
- Development of concept (feasibility), development (design) and execution (construction) budgets
- Governance and Investment Committee approval of project SOW, budget, and associated schedules



New Pinotage Main Transmission Substation (Eskom Transmission)

## RETICULATION (11kV – 33kV)

- MV substation design and reticulation design
- Earthing and lightning protection design
- MV overhead line design
- Cable reticulation design
- Audits



Koster Substation Network Upgrade – 22kV Reticulation (Eskom Distribution)

## PROJECT EXECUTION MANAGEMENT

- Integration Management
- Scope Management
- Time Management
- Cost Management
- Quality Management
- Resource Management
- Communication Management
- Risk Management
- Procurement Management



## DISTRIBUTION AND SUB-TRANSMISSION (33kV – 132kV)

- Sub-transmission substation designs up to 132kV
- Earth mat design
- Insulation co-ordination
- Sub-transmission line designs up to 132kV
- Network studies
- Protection, Telecom, Control and Metering designs
- Overhead line audits
- Earthing design
- Substation audits



Koster Substation Network Upgrade –  
New Koster Substation (Eskom Distribution)

## MINING AND INDUSTRY

- HV and MV substation design (indoor and outdoor switchgear)
- LV and MV distribution and reticulation
- Motor Control Centres
- Overhead line reticulation design
- Cable reticulation design
- Motor selection and application (start, run and harmonic studies)
- Motor starting type selection (VSD, Soft start, Liquid resistance starters)
- Industrial and plant lighting design
- Earthing and lightning protection design
- Electrical Audits
- Diesel generator selection and application
- UPS Systems

## OTHER SUPPORTING ENGINEERING SERVICES

- Geotechnical and Hydrological studies
- Platform designs
- Soil Resistivity surveys
- Survey
- SHEQ services
- Construction Monitoring
- Energy Management Services
- Asset Management and Register (Life Cycle Costing)



## CLIENT PORTFOLIO

---



## ACCREDITATION AND MEMBER ASSOCIATIONS

- Engineering Council of South Africa (ECSA)
- South African Institute of Electrical Engineers (SAIEE)
- Green Building Council South Africa
- Project Management South Africa (PPMSA)

## COMPANY INFORMATION

<b>Registered Name</b>	Intellipro Consulting
<b>Established</b>	July 2007
<b>Registration Number</b>	2013/086646/07
<b>VAT Registration Number</b>	4380240012
<b>COID Registration Number</b>	990000475958
<b>B-BBEE Contributor</b>	Level 1 (EME) 51% Black Owned, 25% Black Women Owned
<b>Gauteng Office</b>	Block C, Menlyn Corporate Park c/o Garsfontein & Corobay Avenue Menlyn Pretoria
<b>Cape Town Office</b>	First Floor, Willowbridge Centre 39 Carl Cronje Drive Cape Town
<b>Phone</b>	082 336 8885
<b>E-mail</b>	info@intellipro.co.za
<b>Website</b>	www.intellipro.co.za



**Michiel Goosen**

Director

