

# COMPANY PROFILE

OF



# CONTENTS

<b>1.</b>	<b>GENERAL INFORMATION .....</b>	<b>3</b>
1.1	INTRODUCTION AND OVERVIEW .....	3
1.2	COMPANY VISION .....	3
1.3	COMPANY MISSION STATEMENT.....	3
1.4	COMPANY VALUES.....	3
<b>2.</b>	<b>COMPANY INFORMATION.....</b>	<b>4</b>
<b>3.</b>	<b>QUALITY MANAGEMENT .....</b>	<b>4</b>
<b>4.</b>	<b>ORGANOGRAM.....</b>	<b>5</b>
<b>5.</b>	<b>PROFESSIONAL SERVICES .....</b>	<b>6</b>
5.1	BUILDING SERVICES.....	6
5.2	MINING & INDUSTRY .....	6
5.3	ELECTRIFICATION .....	6
5.4	RETICULATION (11kV – 33kV) .....	6
5.5	DISTRIBUTION & SUB-TRANSMISSION (33kV–132kV) .....	7
5.6	RENEWABLE ENERGY (CSP & PV PLANTS) .....	7
5.6	PROJECT DEVELOPMENT.....	7
5.7	PROJECT EXECUTION MANAGEMENT .....	8
5.8	OTHER SUPPORTING ENGINEERING SERVICES .....	8
<b>6.</b>	<b>LIST OF PROJECT EXPERIENCE.....</b>	<b>9</b>

# 1. GENERAL INFORMATION

## 1.1 INTRODUCTION AND OVERVIEW

Intellipro Consulting was established in 2007 and is a dynamic engineering consulting company specialising in the management and engineering of electrical engineering projects from inception to completion. Intellipro provides total quality, cost effective and timely solutions throughout the life cycle of each project or any phase thereof.

Intellipro Consulting interacts, networks and build business relationships with various consulting companies to include various other engineering disciplines required to successfully deliver and complete major engineering projects.

## 1.2 COMPANY VISION

Intellipro Consulting's vision is to be a leader and preferred service provider in the engineering and project environment.

## 1.3 COMPANY MISSION STATEMENT

To provide a quality, effective and efficient consulting and management services to the total satisfaction of our clients in the Industrial, Utility, Private and Public sectors by:

- Understanding our clients and their requirements
- Providing a quality service beyond expectation
- Continuously improving our business performance and processes.
- Consistently obtaining new knowledge in technology and management methodologies.
- Creating a satisfying but challenging work environment to all employees

## 1.4 COMPANY VALUES

The core values that we aspire to and which define our culture are:

- **Integrity** – Uncompromising integrity in the conduct of business and the promotion of trustworthiness, transparency, fairness, and respect for others
- **Excellence** – Delivery of service excellence through quality and passion and the ability to add value through innovation and superior performance
- **Commitment** – Continuous commitment to our Clients and their interests
- **Empowerment** – The empowerment of all employees by encouraging participation, creativity and continuous and appropriate personal development

## 2. COMPANY INFORMATION

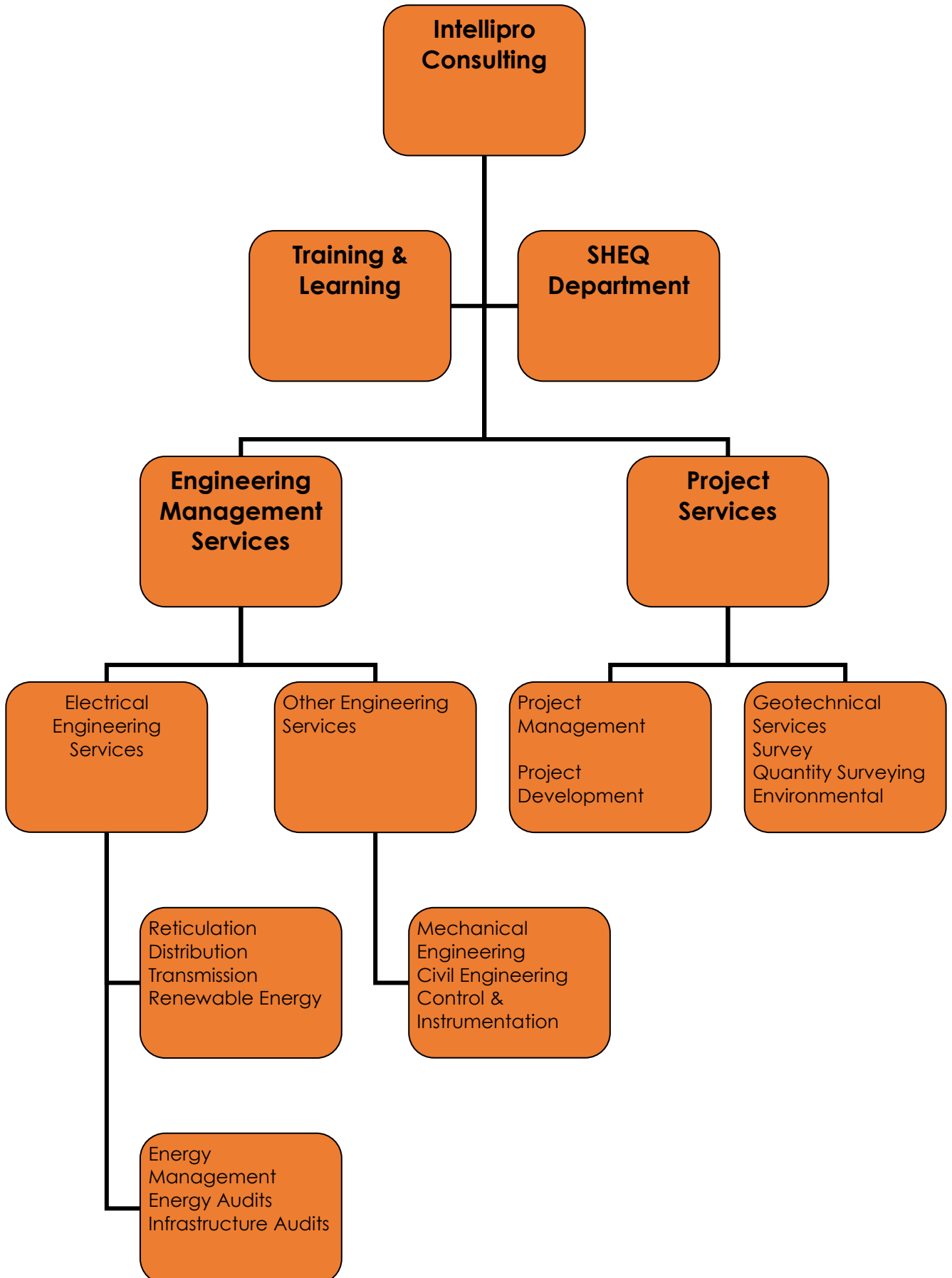
<b>Registered Name:</b>	Intellipro Consulting (Pty) Ltd.
<b>Established</b>	July 2007
<b>Registration Number:</b>	2013/086646/07
<b>VAT Registration Number:</b>	4380240012
<b>COID Registration Number:</b>	990000475958
<b>B-BBEE Contributor:</b>	Level 1 (EME) 51% Black Owned 25% Black Women Owned
<b>Physical Address:</b> Gauteng	Block C, Menlyn Corporate Park, C/O Garfontein Road & Corobay Avenue, Menlyn, Pretoria
<b>Physical Address:</b> Western Cape	First Floor, Willowbridge Centre, 39 Carl Cronje Dr, Cape Town
<b>Phone:</b>	082 336 8885 or 082 808 0760
<b>E-mail:</b>	info@intellipro.co.za
<b>Website:</b>	www.intellipro.co.za

## 3. QUALITY MANAGEMENT

This standard of service is achieved through a multi-disciplined and integrated approach and consists of:

- A Business Management System (BMS), which includes a strong focus on solid business policies, logical processes, and innovative procedures.
- A Quality Management System (QMS), which complies with the international ISO 9001:2015 standard. A day-to-day assessment and management of risks related to all relevant industries and projects.
- Intellipro Consulting also strives to continuously improve on these systems by adopting and integrating well-established programmes from world-renowned industry leaders.

## 4. ORGANOGRAM



## **5. PROFESSIONAL SERVICES**

### **5.1 BUILDING SERVICES**

- Building automation
- Lighting design
- Earthing and lightning protection design
- LV and MV reticulation design
- Electrical installation audits

### **5.2 MINING & INDUSTRY**

- HV and MV substation design (indoor and outdoor switchgear)
- LV and MV distribution and reticulation
- Distribution transformers
- Variable speed drives (LV and MV)
- Motor Control Centres
- Overhead line design
- Cable reticulation design
- Motor selection and application (Start, run and harmonic studies)
- Motor starting type selection (VSD, Soft start, Liquid resistance starters)
- Industrial and plant lighting design
- Earthing and lightning protection design
- Electrical audits
- Diesel generator selection and application
- UPS Systems

### **5.3 ELECTRIFICATION**

- Town electrification design
- Electrification strengthening
- Electrification refurbishment
- Audits
- Transformer zone design
- MV line design
- LV Strengthening projects

### **5.4 RETICULATION (11kV – 33kV)**

- MV substation design
- Earthing and lightning protection design
- MV line design
- Audits
- Cable reticulation design

## **5.5 DISTRIBUTION & SUB-TRANSMISSION (33kV–132kV)**

- Sub-transmission substation designs up to 132kV
- Substation audits
- Earthmat design
- Strengthening
- Refurbishment
- Insulation co-ordination
- Sub-transmission line designs up to 132kV
- Network Studies
- Protection, Telecom, Control and Metering designs
- Overhead line audits
- Earthing design
- Insulation co-ordination

## **5.6 RENEWABLE ENERGY (CSP & PV PLANTS)**

- Cost Estimates
- Project Development of IPP integration projects
- Grid connection studies
- Grid code studies
- Line design (Self build projects)
- Substation design (Self build projects)
- EIAs
- Project Management
- Technical Support
- Training & Learning

## **5.6 PROJECT DEVELOPMENT**

Project Development Managers overseeing the project development from initial planning through the feasibility and design stages up to the project being released for execution and handed over to construction management.

- Development of Projects through the concept and definition phases by integrating and interfacing with various project stakeholders on a multi-disciplinary project team.
- Project Management activities across the 9 areas of the project management body of knowledge.
- Project Management of projects being developed or executed which involves:
  - Establishing customer requirements and converting it to project requirements.
  - Preparation of project contracting strategies and project cost estimates.
  - Project management in the design phase of projects.
  - Integrating and interfacing with various project stakeholders on a multi-disciplinary project team.
- Development of development and execution schedules.
- Development of concept (feasibility), development (design) and execution (construction) budgets.
- Governance and approval of project SOW, budget and associated schedules.
- Feasibility studies
- Scope definition
- Cost estimation
- Co-ordination of Feasibility studies

## **5.7 PROJECT EXECUTION MANAGEMENT**

- Integration Management
- Scope Management
- Time Management
- Cost Management
- Quality Management
- Resource Management
- Communication Management
- Risk Management
- Procurement Management

## **5.8 OTHER SUPPORTING ENGINEERING SERVICES**

- Geotechnical and Hydrological Studies
- Platform designs
- Soil Resistivity surveys
- Survey
- SHEQ Services
- Construction Monitoring
- Planning: Outage Management
- Energy Management Services
- Asset Management & Register (Life Cycle Costing)



## **6. LIST OF PROJECT EXPERIENCE**

LIST OF PREVIOUS PROJECTS - ELECTRIFICATION PROJECT DESIGN							
PROJECT NAME	DESCRIPTION	CLIENT	CAPITAL VALUE OF PROJECT (Rm)	DISCIPLINE	Completed	CONTACT	ORGAN OF STATE
New electrification design consisting of 378 stands - Ga Magongoa Village	Professional Engineering Services- Electrification	Eskom Distribution	R5.4 M	Electrical	2017	Eskom Dx Sydney Mamosadi 015 299 0641	YES
New electrification design consisting of 534 stands - Ga Selala Village	Professional Engineering Services- Electrification	Eskom Distribution	R6.9 M	Electrical	2017	Eskom Dx Sydney Mamosadi 015 299 0641	YES
New electrification design consisting of 237 stands - Khutsong Village	Professional Engineering Services- Electrification	Eskom Distribution	R3.8 M	Electrical	2017	Eskom Dx Sydney Mamosadi 015 299 0641	YES
New electrification design consisting of 175 Stands - Shenyaneng Village	Site verification, Design, Technical & Investment evaluations for electrification	Eskom Distribution	R0.2M	Electrical	2016	Eskom Dx Mpho Mulaudzi 015 299 0067	YES
New electrification design consisting of 595 Stands -Ga Puka Village	Site verification, Design, Technical & Investment evaluations for electrification	Eskom Distribution	R0.5M	Electrical	2016	Eskom Dx Mpho Mulaudzi 015 299 0067	YES
New electrification design consisting of 534 Stands - Apiesdoring Village	Site verification, Design, Technical & Investment evaluations for electrification	Eskom Distribution	R0.4M	Electrical	2016	Eskom Dx Mpho Mulaudzi 015 299 0067	YES
New electrification design consisting of 45 Stands - Santeng	Site verification, Design, Technical & Investment evaluations for electrification	Eskom Distribution	R0.1M	Electrical	2015	Eskom Dx Mpho Mulaudzi 015 299 0067	YES
New electrification design consisting of 515 Stands - Ngove Village	Site verification, Design, Technical & Investment evaluations for electrification	Eskom Distribution	R0.5M	Electrical	2015	Eskom Dx Mpho Mulaudzi 015 299 0067	YES
New electrification design consisting of 38 stands -Machoana Village	Professional Engineering Services- Electrification	Eskom Distribution	R2 M	Electrical	2014	Eskom Dx Mpho Mulaudzi 015 299 0067	YES
New electrification design consisting of 185 stands - Shakadza Village	Professional Engineering Services- Electrification	Eskom Distribution	R2 M	Electrical	2014	Eskom Dx Mpho Mulaudzi 015 299 0067	YES
New electrification design consisting of 70 stands - Moshongo Ext.	Professional Engineering Services- Electrification	Eskom Distribution	R2 M	Electrical	2014	Eskom Dx Mpho Mulaudzi 015 299 0067	YES
New electrification design consisting of 122 stands - New Stand Village	Professional Engineering Services- Electrification	Eskom Distribution	R2 M	Electrical	2014	Eskom Dx Mpho Mulaudzi 015 299 0067	YES

**LIST OF PREVIOUS PROJECTS - OVERHEAD LINE DESIGN**

<b>PROJECT NAME</b>	<b>DESCRIPTION</b>	<b>CLIENT</b>	<b>CAPITAL VALUE OF PROJECT (Rm)</b>	<b>DISCIPLINE</b>	<b>Completed</b>	<b>CONTACT</b>	<b>ORGAN OF STATE</b>
Mapoch Blue Ridge 88/11kV – Line Design	Provision of detail design and construction monitoring services for the refurbishment of 30km 88kV O/H line and installation of OPGW.	Eskom Distribution	R30.4 M	Electrical	2014	Eskom Distribution Bones Lubisi 015 299 4449	YES
Matambo-Moatize 66kV line design	Design of 39km 66kV Rail conductor overhead line from Matambo 220/66kV substation to Moatize substation. The 247 structure series was utilised and the design included a crossing over the Zambezi river.	ABB	R40 M	Electrical	2011	ABB Michiel Strydom 083 381 2056	No
Adams IPP 132kV line designs	Design of the 132kV Line	Root 3	R20 M	Electrical	2014	Plantech JD Voigt 012 349 2253	No
Pulida IPP 132kV line designs	Design of the 132kV Line	Root 3	R15 M	Electrical	2014	Plantech JD Voigt 012 349 2253	No
Witkop IPP 132kV line 300m	Design of 132kV line from Witkop MTS to adjacent PV Solar Park	ABB	R1.5 M	Electrical	2011	ABB Michiel Strydom 083 381 2056	No
Dikgale 33kV 14km line	Design 14km 33kV line.	Eskom Distribution	R 32.3 M	Electrical	2011	Eskom Distribution Julian Allison 083 4144 4177	YES
Kinross T Project	Representing client on self build project. Design of the new Kinross 8km 132kV line.	African Exploration Mining and Finance Company	R 70 M	Electrical	Cancelled	AEMFC Phathu Maisha 010 010 6102	YES
Argent Siding: 11kV & 132kV line clearance	Representing client on the lift of 11kV and relocation of 132kV line at Argent Traction.	Canyon Coal	R 0.15 M	Electrical	2018	Canyon Coal Melissa Pillay 011 783 7996	No
City of Cape Town; Mitchells Plain - Steenbras 132kV line deviation	132kV line design	BVI Consulting Engineers	R 2.7 M	Electrical	2019	BVI Gernot Halberstad	No

LIST OF PREVIOUS PROJECTS - SUBSTATION DESIGN							
PROJECT NAME	DESCRIPTION	CLIENT	CAPITAL VALUE OF PROJECT (Rm)	DISCIPLINE	Completed	CONTACT	ORGAN OF STATE
Transalloys Substation Upgrade	Design of the substation upgrade.	Eskom Distribution	R 45 M	Electrical	2012	Eskom Dx Gary Abrahams 012 421 3111	YES
Mathambo Substation Design of extension of existing Substation	Design of the 2x45MVA 220/66kV Matambo Substation Extension.	ABB	R60 M	Electrical	2011	ABB Michiel Strydom 083 381 2055	No
Brits Industries & Rural Cap Banks (40MVar & 30MVar)	Provision of detail design, supply, delivery, erection & commissioning of capacitor bank at Brits Rural substation	Eskom Distribution	R20 M	Electrical	2013	Eskom Distribution Jan le Roux 012 421 3086	YES
Dikgale S/S	Design of Dikgale 2x10MVA substation and 14km 33kV line.	Eskom Distribution	R 32.3 M	Electrical	2011	Eskom Distribution Julian Allison 083 4144 4177	YES
Uitkoms Substation refurbishment	Design of the substation upgrade.	Eskom Distribution	R 23.2 M	Electrical	2010	Eskom Distibution Alex Ndlela 031 710 5422	YES
Koster Substation – Network Upgrade	Design of the new Koster 4x20MVA 88/22&11kV substation.	Eskom Distribution	R 74.2 M	Electrical	2010	Eskom Dx Jan le Roux 012 421 3085	YES
Kinross T Project	Representing client on self build project. Design of the new Kinross 2x20MVA 132/11kV substation.	African Exploration Mining and Finance Company	R 70 M	Electrical	Cancelled	AEMFC Phathu Maisha 010 010 6102	YES

LIST OF PREVIOUS PROJECTS - PROJECT EXECUTION MANAGEMENT							
PROJECT NAME	DESCRIPTION	CLIENT	CAPITAL VALUE OF PROJECT (Rm)	DISCIPLINE	Completed	CONTACT	ORGAN OF STATE
New Big Tree 132kV Substation and Fairfield Bigtree 132kV line.	Project Execution Management during construction through to commissioning.	Eskom Distribution	R 29.5 M	Electrical	2010	Eskom Dx Jan le Roux 012 421 3085	YES
Phokeng – Replacement of 11kV indoor Substation switchgear	Provision Of Project Management Services for the replacement and normalisation of the 11kV indoor switchgear at Phokeng 132/11kV Substation.	Eskom Distribution	R10 M	Electrical	2014	Eskom Distribution Jan le Roux 012 421 3085	YES
Mapoch Blue Ridge 88/11kV – Line Design	Provision Of Project Management Services for the refurbishment of 30km 88kV O/H line and installation of OPGW.	Eskom Distribution	R30.4 M	Electrical	2014	Eskom Distribution Bones Lubisi 015 299 4449	YES
Kusile Rail Power Supply – Professional Engineering services	Provision Of Project Management Services for the project engineering and construction of 2x 6MVA 88kV Traction substations.	Eskom Distribution	R70 M	Electrical	2013	Eskom Distribution Jan le Roux 012 421 3086	YES
Dithabaneng Substation (& 9 interdependent projects)	Provision of project management services for the construction of a 132/33/11kV substation, 30km 132kV overhead line, 35km 33kV O/H line and various 11kV feeders.	Eskom Distribution	R135 M	Electrical	2013	Eskom Distribution Julian Allison 015 299 0169	YES
Brits Industries & Rural Cap Banks (40MVar & 30MVar)	Provision of detail design, supply, delivery, erection & commissioning of capacitor bank at Brits Rural substation	Eskom Distribution	R20 M	Electrical	2013	Eskom Distribution Jan le Roux 012 421 3086	YES
Koster Substation – Network Upgrade	Design, project engineering and project management of the new Koster 4x20MVA 88/22&11kV substation.	Eskom Distribution	R 74.2 M	Electrical	2010	Eskom Dx Jan le Roux 012 421 3085	YES
Uitkoms Substation refurbishment	Design, project engineering and project management of the substation upgrade.	Eskom Distribution	R 23.2 M	Electrical	2010	Eskom Distibution Alex Ndlela 031 710 5422	YES

LIST OF PREVIOUS PROJECTS - GEOTECHNICAL STUDIES AND PLATFORM DESIGNS							
PROJECT NAME	DESCRIPTION	CLIENT	CAPITAL VALUE OF PROJECT (Rm)	DISCIPLINE	Completed	CONTACT	ORGAN OF STATE
Redhill Substation	Investigation of failing platform and redesign of platform and drainage systems.	Eskom Distribution	R 5 M	Electrical	2013	Eskom Distribution Frans Wahl 012 4213327	YES
Dikgale Substation	Geotechnical investigation and 2x10MVA 33/11kV substation platform design.	Eskom Distribution	R 0.3 M	Electrical	2013	Eskom Distribution Frans Wahl 012 4213327	YES
Veeplaas Substation	Geotechnical investigation platform storm water drainage design	Eskom Distribution	R 0.3 M	Electrical	2013	Eskom Distribution Frans Wahl 012 4213327	YES
Mataffin Substation	Geotechnical investigation, platform storm water drainage design.	Eskom Distribution	R 0.3 M	Electrical	2013	Eskom Distribution Frans Wahl 012 4213327	YES
Mathambo Substation	Platform design	ABB	R0.3 M	Electrical	2009	ABB Michiel Strydom 083 381 2054	No
Dithabaneng-Middelpunt 132kV line	Geotechnical investigation for 30km 132kV line.	Eskom Distribution	R 0.3 M	Electrical	2013	Eskom Distribution Frans Wahl 012 4213327	YES
Thulamela Substation	Geotechnical investigation, platform storm water drainage design. Project Development up to execution phase	Eskom Distribution	R 0.3 M	Electrical	2013	Eskom Distribution Frans Wahl 012 4213327	YES
Adam & Pulida Platform Design	Geotechnical investigation, platform & storm water drainage design	Plantech	R 0.3 M	Electrical	2014	Plantech JD Voigt 012 349 2253	No
Dithabaneng Substation	Geotechnical investigation, platform & storm water drainage design	Eskom Distribution	R 0.3 M	Electrical	2013	Eskom Distribution Frans Wahl 012 4213327	YES
Witkop Substation	Design Geotechnical investigation, platform storm water drainage design. Project Development up to execution phase.	ABB	R0.3 M	Electrical	2011	ABB Michiel Strydom 083 381 2054	No

**LIST OF PREVIOUS PROJECTS - PROJECT DEVELOPMENT**

<b>PROJECT NAME</b>	<b>DESCRIPTION</b>	<b>CLIENT</b>	<b>CAPITAL VALUE OF PROJECT (Rm)</b>	<b>DISCIPLINE</b>	<b>Completed</b>	<b>CONTACT</b>	<b>ORGAN OF STATE</b>
Kimberly Strengthening Phase 2	Project Development and Project Management of the scope definition and design phases and cost estimation.	Eskom Transmission	R 1 855 M	Electrical	2014	Eskom Tx A van der Walt 011 800 3917	YES
Kimberley Strengthening Phase 3: Hotazel 400kV loop-in and 2x500MVA 400/132kV substation	Project Development and Project Management of the scope definition and design phases and cost estimation.	Eskom Transmission	R 2 290 M	Electrical	2017	Eskom Tx A van der Walt 011 800 3917	YES
Mookodi (Vryburg) 400/132kV Substation	Project Development and Project Management of the scope definition and design phases and cost estimation.	Eskom Transmission	R 410 M	Electrical	2014	Eskom Tx A van der Walt 011 800 3917	YES
Ngwedi 400/132kV 2 x 500MVA MTS	Project Development and Project Management of the scope definition and design phases and cost estimation.	Eskom Transmission	R 700 M	Electrical	2018	Eskom Tx A van der Walt 011 800 3917	YES
Aries - Nieuwehoop 400kV line	Project Development and Project Management of the scope definition and design phases and cost estimation.	Eskom Transmission	R 642 M	Electrical	2018	Eskom Tx A van der Walt 011 800 3917	YES
Borutho 400/132kV 2 x 500MVA substation	Project Development and Project Management of the scope definition and design phases and cost estimation.	Eskom Transmission	R 640 M	Electrical	2018	Eskom Tx A van der Walt 011 800 3917	YES
Medupi Transmission Integration	Project Development and Project Management of the scope definition and design phases and cost estimation.	Eskom Transmission	R 9 800 M	Electrical	2018	Eskom Tx A van der Walt 011 800 3917	YES
Ngwedi 400/132kV 2 x 500MVA substation	Project Development and Project Management of the scope definition and design phases and cost estimation.	Eskom Transmission	R613.03 M	Electrical	2013	Eskom Tx A van der Walt 011 800 3917	YES
Erica (Mitchells Plain) 400/132kV 2x500MVA MTS 12km 400kV D/C Line	Project Development and Project Management of the scope definition and design phases and cost estimation.	Eskom Transmission	R1 165.17 M	Electrical	2019	Eskom Tx A van der Walt 011 800 3917	YES

**LIST OF PREVIOUS PROJECTS - PROJECT DEVELOPMENT**

<b>PROJECT NAME</b>	<b>DESCRIPTION</b>	<b>CLIENT</b>	<b>CAPITAL VALUE OF PROJECT (Rm)</b>	<b>DISCIPLINE</b>	<b>Completed</b>	<b>CONTACT</b>	<b>ORGAN OF STATE</b>
Pinotage (Firgrove) 400/132kV 2x500MVA MTS	Project Development and Project Management of the scope definition and design phases and cost estimation.	Eskom Transmission	R573 M	Electrical	2015	Eskom Tx A van der Walt 011 800 3917	YES
Blanco Integration; Narina MTS	Project Development and Project Management of the scope definition and design phases and cost estimation.	Eskom Transmission	R776.71 M	Electrical	2019	Eskom Tx A van der Walt 011 800 3917	YES
Houhoek Integration: Asteria MTS and lines	Project Development and Project Management of the scope definition and design phases and cost estimation.	Eskom Transmission	R885 M	Electrical	2019	Eskom Tx A van der Walt 011 800 3917	YES
Ankerlig - Sterrekus 18km 400kV D/C line	Project Development and Project Management of the scope definition and design phases and cost estimation.	Eskom Transmission	R436 M	Electrical	2015	Eskom Tx A van der Walt 011 800 3917	YES
Vryheid Network Str: Agulhas MTS & 400kV lines	Project Development and Project Management of the scope definition and design phases and cost estimation.	Eskom Transmission	R656.72 M	Electrical	2019	Eskom Tx A van der Walt 011 800 3917	YES
Replacement of under-insulated equipment in Transmission - Koeberg Substation	Project Development and Project Management of the scope definition and design phases and cost estimation.	Eskom Transmission	R18.16 M	Electrical	2013	Eskom Tx A van der Walt 011 800 3917	YES
Cape Corridor 2nd 765kV line from Standardton to Cape Town.	Project Development and Project Management of the scope definition and design phases and cost estimation.	Eskom Transmission	R38 000 M	Electrical	2018	Eskom Tx A van der Walt 011 800 3917	YES
Tshwane Strengthening; Verwoerdburg Substation	Project Development and Project Management of the scope definition and design phases and cost estimation.	Eskom Transmission	R548 M	Electrical	2018	Eskom Tx A van der Walt 011 800 3917	YES
Nuclear 1 (Thyspunt, Bantamsklip and Duynefontein) Transmission Integration	Project Development and Project Management of the scope definition and design phases and cost estimation.	Eskom Transmission	R8 215 M	Electrical	2018	Eskom Tx A van der Walt 011 800 3917	YES



LIST OF PREVIOUS PROJECTS - PROJECT DEVELOPMENT							
PROJECT NAME	DESCRIPTION	CLIENT	CAPITAL VALUE OF PROJECT (Rm)	DISCIPLINE	Completed	CONTACT	ORGAN OF STATE
Waterberg Stability Enhancement Project	Project Development and Project Management of the scope definition and design phases and cost estimation.	Eskom Transmission	R1 784 M	Electrical	2018	Eskom Tx A van der Walt 011 800 3917	YES
Various IPP Projects (Integration into the Eskom Grid)	Project Development and Project Management of the scope definition and design phases and cost estimation.	Eskom Transmission	R500 M	Electrical	2018	Eskom Tx A van der Walt 011 800 3917	YES
Acacia Koeberg 2nd 400kv line	Project Development and Project Management of the scope definition and design phases and cost estimation.	Eskom Transmission	R117 M	Electrical	2019	Eskom Tx A van der Walt 011 800 3917	YES
Droerivier - Narina - Gourikwa 400kv Line	Project Development and Project Management of the scope definition and design phases and cost estimation.	Eskom Transmission	R1 573 M	Electrical	2019	Eskom Tx A van der Walt 011 800 3917	YES
Koeberg New 2x250MVA 400/132kV GIS substation and deviation of associated 400kV & 132kV lines.	Project Development and Project Management of the scope definition and design phases and cost estimation.	Eskom Transmission	R1 672 M	Electrical	2019	Eskom Tx A van der Walt 011 800 3917	YES
Philippi MTS: Installation of 400kV busbar and 3rd 400/132kV 500MVA Trfr.	Project Development and Project Management of the scope definition and design phases and cost estimation.	Eskom Transmission	R643 M	Electrical	2019	Eskom Tx A van der Walt 011 800 3917	YES
Saldanha Bay Network Strengthening Bokkom 2x500MVA 400/132kV Substation. Aurora - Blouwater 1st 25km 400kV line. Aurora - Blouwater 2n 25km 400kV line	Project Development and Project Management of the scope definition and design phases and cost estimation.	Eskom Transmission	R446 M	Electrical	2019	Eskom Tx A van der Walt 011 800 3917	YES

LIST OF PREVIOUS PROJECTS - IPP INTEGRATION/RENEWABLE							
PROJECT NAME	DESCRIPTION	CLIENT	CAPITAL VALUE OF PROJECT (Rm)	DISCIPLINE	Completed	CONTACT	ORGAN OF STATE
Aurora Ext 132kV feeder bay (Wind)	Project Development and Project Management of the scope definition and design phases and cost estimation. Aurora Ext 132kV feeder bay (Wind). Aurora Wind Phase 1: Ext 132kV feeder bay	Eskom Transmission	R12.7 M	Electrical	2014	Eskom Tx A van der Walt 011 800 3917	Yes
Grassridge Innowind - 60MW Wind Farm	Project Development and Project Management of the scope definition and design phases and cost estimation. Grassridge Innowind - 60MW Wind Farm. Feeder bay in Grassridge MTS	Eskom Transmission	R12.9 M	Electrical	2014	Eskom Tx A van der Walt 011 800 3917	Yes
Kangnas IPP integration on Aggeneis Nama 220kV line	IPP Self Build of establishing Groeipunt MTS on the Aggeneis Nama 220kV line by looping in and out (2 x 0.5km). 1 x 250MVA transformer. 1 x 132kV feeder. (Self build)	Eskom Transmission	R16.2 M	Electrical	2018	Eskom Tx A van der Walt 011 800 3917	Yes
Kathu IPP integration at Ferrum	Protection and setting changes and installation of 3 x 132kV VTs on Umthu/Adams feeder.	Eskom Transmission	R25.1 M	Electrical	2017	Eskom Tx A van der Walt 011 800 3917	Yes
Loeriesfontein Orange IPP	Helios 132kV busbar extension with 4 bays and 1 x 132kV feeder	Eskom Transmission	R24.9 M	Electrical	2018	Eskom Tx A van der Walt 011 800 3917	Yes
Longyuan Mulilo De Aar 2 North Wind Energy Facility	Hydra MTS: Extend 400kV and 132kV busbars and install a new 500MVA transformer replace under-rated equipment not conforming to the new fault levels. Install a new 132kV feeder bay	Eskom Transmission	R369 M	Electrical	2018	Eskom Tx A van der Walt 011 800 3917	Yes
Longyuan Mulilo De Aar Maanhaarberg Wind Energy Facility	Hydra MTS: Extend 400kV and install a new 500MVA transformer replace under-rated equipment. Install a new 132kV feeder bay	Eskom Transmission		Electrical	2018	Eskom Tx A van der Walt 011 800 3917	Yes
Nojoli Wind Farm	1 x 132kV feeder bay at Poseidon MTS	Eskom Transmission	R14.3 M	Electrical	2016	Eskom Tx A van der Walt 011 800 3917	Yes
Redstone CSP Integration at Olien	Establish a 132kV feeder at Olien S/S and upgrade the 132kV bus coupler scheme	Eskom Transmission	R14.3 M	Electrical	2018	Eskom Tx A van der Walt 011 800 3917	Yes

LIST OF PREVIOUS PROJECTS - IPP INTEGRATION/RENEWABLE							
PROJECT NAME	DESCRIPTION	CLIENT	CAPITAL VALUE OF PROJECT (Rm)	DISCIPLINE	Completed	CONTACT	ORGAN OF STATE
Thabametsi Coal Power Station Integration	Establish the Thabametsi 400 kV MTS, 2 x 20 km 400 kV line to loop the Matimba Medupi 400 kV line into and out of the new Thabametsi MTS and related remote 400kV feeder bays.	Eskom Transmission	R826 M	Electrical	2018	Eskom Tx A van der Walt 011 800 3917	Yes
Waterloo 75MW Solar	Waterloo 132kV Feeder at Mookodi Substation	Eskom Transmission	R17.4 M	Electrical	2019	Eskom Tx A van der Walt 011 800 3917	Yes
Witkop IPP 132kV line 300m	Design of 132kV line from Witkop MTS to adjacent PV Solar Park	ABB	R1.5 M	Electrical	2011	ABB Michiel Strydom 083 381 2056	No
Adams & Pulida IPP's 132kV line designs Platform Substation	Design of the 132kV Line desings Platform Substation	Root 3	R35 M	Electrical	2014	Plantech JD Voigt 012 349 2253	No
Harava 20MW PV Plant	Grid Code Studies, Grid Connection Design, Project Management	Exess Africa	(USD) \$4.1 M	All	Current	George Beukes 083 556 7169	No
Solgas 5MW PV Plant - Cross Mabale in Hwange, Zimbabwe	Owner's Engineers	Solgas Energy	(USD) \$4.6 M	All	Current	Tafadzwa Mundicha +263 71 939 8973	No
LIST OF PREVIOUS PROJECTS - BUILDING SERVICES							
PROJECT NAME	DESCRIPTION	CLIENT	CAPITAL VALUE OF PROJECT (Rm)	DISCIPLINE	Completed	CONTACT	ORGAN OF STATE
Zimbabwe Beitbridge Border post Upgrade	Site Reticulation and Building Electrical Design	Raubex	R 103 M	Electrical	Current	Raubex Building Marius Kruger 082 579 5469	No
LIST OF PREVIOUS PROJECTS - MINING SERVICES							
PROJECT NAME	DESCRIPTION	CLIENT	CAPITAL VALUE OF PROJECT (Rm)	DISCIPLINE	Completed	CONTACT	ORGAN OF STATE
Swartberg Open Pit Feasibility Study	Engineering Services for Electrical, Control & Instrumentation an	Exess Africa	N/A	Electrical	2020	George Beukes 083 556 7169	No