



Head Office:

Tel: 012 940 1118

Email: info@intellipro.co.za **Web:** www.intellipro.co.za

Block C, Menlyn Corporate Park, c/o Garfontein Road & Corobay Avenue, Menlyn
PO Box 101911, Moreleta Plaza, 0167

CONTENTS

1. GENERAL INFORMATION

- 1.1 Introduction and Overview
- 1.2 Philosophy & Methodology (QMS)
- 1.3 Company Vision
- 1.4 Company Mission Statement
- 1.5 Company Values

2. COMPANY INFORMATION

3. MEMBERS INFORMATION

4. ORGANISATIONAL STRUCTURE

5. CUSTOMER SECTOR GROUPS

6. PROFESSIONAL SERVICES OFFERED

- 6.1 Building Service
- 6.2 Mining & Industry
- 6.3 Electrification
- 6.4 Reticulation (11kV-33kV)
- 6.5 Distribution & Sub Transmission (33kV-132kV) substation design
- 6.6 Distribution & Sub Transmission (33kV-132kV) line design
- 6.7 Transmission project development 88kV-765kV (Group Capital)
- 6.8 Renewable Energy (CPS& PV Plants)
- 6.9 Traction/Railway engineering
- 6.10 Project Execution Management for Overhead Line and substation projects
- 6.11 Other Supporting engineering Services

7. TRAINING & LEARNING

8. PROJECT EXPERIENCE

1. GENERAL INFORMATION

1.1 INTRODUCTION AND OVERVIEW

Intellipro Consulting is a dynamic engineering consulting company specialising in the management and engineering of electrical engineering projects from inception to completion. Intellipro provides total quality, cost effective and timely solutions throughout the life cycle of each project or any phase thereof.

Intellipro Consulting interacts, networks and build business relationships with various consulting companies to include various other engineering disciplines required to successfully deliver and complete major engineering projects, which incorporates the following

Engineering Disciplines:

- **Electrical Engineering (Design)**
 - Sub-Transmission Lines
 - HV & MV Substations & Lines
 - Reticulation
 - Electrification
- Mechanical Engineering
- Civil Engineering (Platform Design)
- Control & Instrumentation
- Automation
- Surveying
- Geotechnical Studies
- Environmental Consulting
- Quantity Surveying
- Railway Engineering

Related Supporting Management Services:

- Project Management
- Construction Management (Supervision)
- Safety Management
- EPCM
- Skills Development & Learning

1.2 PHILOSOPHY

The success of projects mainly depends on the competence of the consultant. As part of the competence of consultants, the consultant should assume four basic roles: expert, manager, researcher and adviser.

- As expert Intellipro Consulting is the provider of skills and knowledge. Clients would expect Intellipro Consulting to be able to speak with appropriate expertise in their specialised area.
- The role of manager requires Intellipro Consulting to have special skills in managing and controlling the assigned project.
- In the role of a researcher, Intellipro Consulting accepts the responsibility for obtaining, analysing and interpreting objective data in a scientific manner.
- In the adviser role, Intellipro Consulting assists clients in learning and obtaining knowledge through formal methods and subsequently assumes responsibility for the clients learning process.

1.3 COMPANY VISION

Intellipro Consulting's vision is to be a leader and preferred service provider in the engineering and project environment.

1.4 COMPANY MISSION STATEMENT

To provide a quality, effective and efficient consulting and management services to the total satisfaction of our clients in the Industrial, Utility, Private and Public sectors by:

- Understanding our clients and their requirements
- Providing a quality service beyond expectation
- Continuously improving our business performance and processes.
- Consistently obtaining new knowledge in technology and management methodologies.
- Creating a satisfying but challenging work environment to all employees

1.5 COMPANY VALUES

The core values that we aspire to and which define our culture are:

- **Integrity** – Uncompromising integrity in the conduct of business and the promotion of trustworthiness, transparency, fairness and respect for others
- **Excellence** – Delivery of service excellence through quality and passion and the ability to add value through innovation and superior performance
- **Commitment** – Continuous commitment to our Clients and their interests
- **Empowerment** – The empowerment of all employees by encouraging participation, creativity and continuous and appropriate personal development

2. COMPANY INFORMATION

Registered Name:	Intellipro Consulting (Pty) Ltd.
Registration Number:	2013/086646/07
VAT Registration Number:	4380240012
COID Registration Number:	990000475958
B-BBEE Contributor:	Level 2 (EME) 51% Black Woman Owned

Contact Information (Head Office: Gauteng Region):

Postal Address	PO Box 101911, Moreleta Plaza, 0167
Physical Address	Block C, Menlyn Corporate Park, c/o Garsfontein & Corobay Avenue, Menlyn.
Telephone	(012) 940 1118
E-mail Address	info@intellipro.co.za

3. SHAREHOLDERS INFORMATION

Michiel Goosen, Pr. Eng.

Shareholding: 24.5%

Professional and Academic Qualifications:

Pr. Eng. (No 20010263)
M.Eng. (Project Management), University of Pretoria
B.Eng. (Hons) (Technology Management), University of Pretoria
B.Eng. (Electrical/Electronic), University of Stellenbosch

Membership of Professional Societies:

ECSA: Registered as Professional Engineer with the Engineering Council of South Africa
SAIEE: Registered as member of the South African Institute for Electrical Engineers
PMSA: Registered as member with Project Management South Africa

Hannes Joubert, Pr. Eng.

Shareholding: 24.5%

Professional and Academic Qualifications:

- Pr. Eng. (No 20000214)
- M.Eng. (Project Management), University of Pretoria
- B.Eng. (Electrical), University of Pretoria

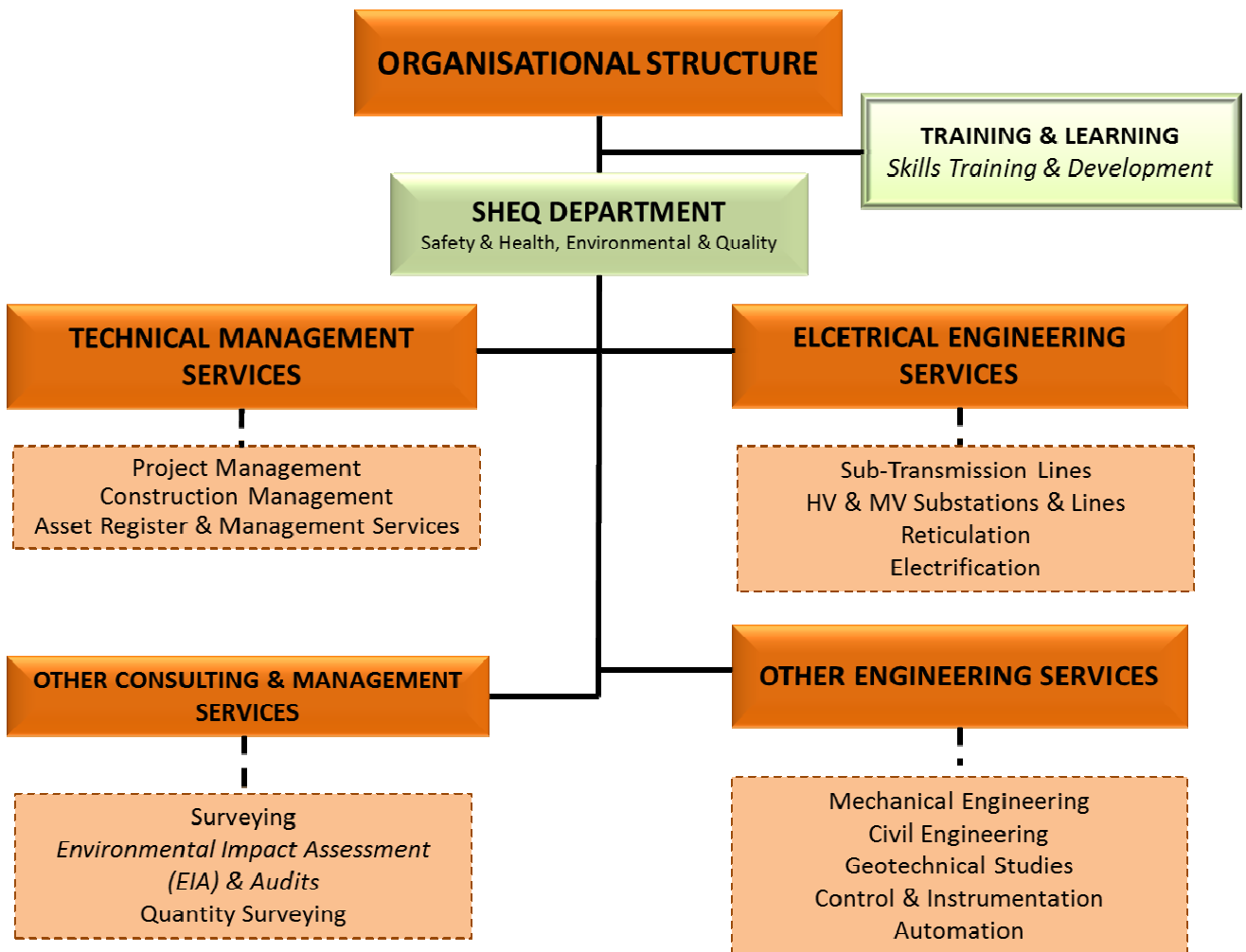
Membership of Professional Societies:

- ECSA*: Registered as Professional Engineer at the Engineering Council of South Africa
- SAIEE*: Registered as member of the South African Institute for Electrical Engineers
- PMSA*: Registered as member with Project Management South Africa

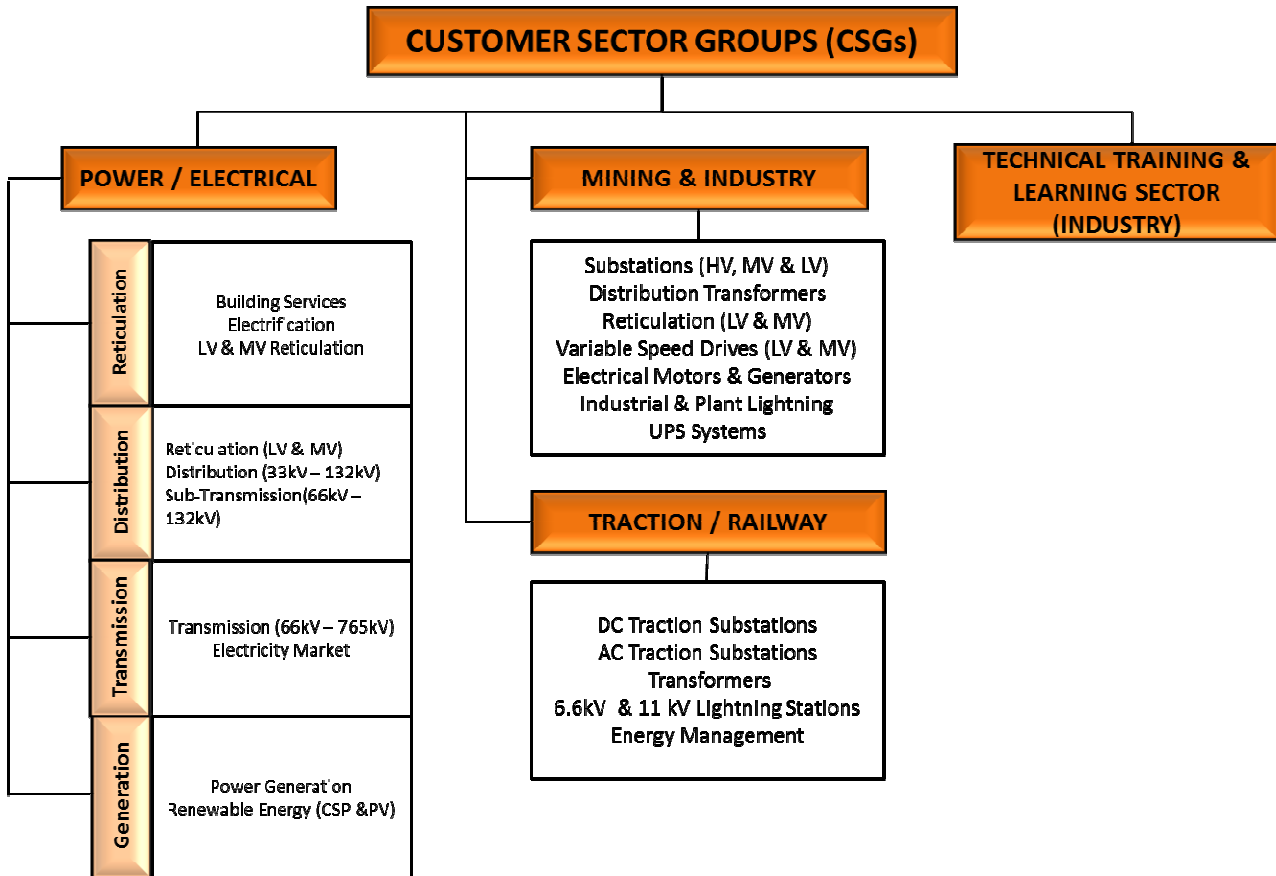
EMPOWER DEVELOPMENT INITIATIVE (EDI) TRUST IT 001421/2016 (T)

Shareholding: 51%

4. ORGANISATIONAL STRUCTURE



5. CUSTOMER SECTOR GROUPS (CSGs)



6. PROFESSIONAL SERVICES OFFERED

6.1 BUILDING SERVICES

- Building automation
- Lighting design
- Earthing and lightning protection design
- LV and MV reticulation design
- Electrical installation audits

6.2 MINING & INDUSTRY

- HV and MV substation design (indoor and outdoor switchgear)
- LV and MV distribution and reticulation
- Distribution transformers
- Variable speed drives (LV and MV)
- Motor Control Centres
- Overhead line design
- Cable reticulation design
- Motor selection and application (Start, run and harmonic studies)
- Motor starting type selection (VSD, Soft start, Liquid resistance starters)
- Industrial and plant lighting design
- Earthing and lightning protection design
- Electrical audits
- Diesel generator selection and application
- UPS Systems

6.3 ELECTRIFICATION

- Town electrification design
- Electrification strengthening
- Electrification refurbishment
- Audits
- Transformer zone design
- MV line design
- LV Strengthening projects

6.4 RETICULATION (11kV – 33kV)

- MV substation design
- Earthing and lightning protection design
- MV line design
- Audits
- Cable reticulation design

6.5 DISTRIBUTION & SUB-TRANSMISSION (33kV–132kV) Substation design

- Distribution substation design up to 132kV
- Sub-transmission line design up to 132kV
- Substation audits
- Earthmat design
- Strengthening
- Refurbishment
- Emergency lighting design
- Insulation co-ordination

6.6 DISTRIBUTION & SUB-TRANSMISSION (33kV – 132kV) Line design

- Distribution line design up to 132kV
- Sub-transmission line design up to 132kV
- Overhead line audits
- Earthing design
- Strengthening
- Refurbishment
- Insulation co-ordination

6.7 TRANSMISSION Project Development (88kV – 765kV)

Project Development Managers overseeing the project development from initial planning through the feasibility and design stages up to the project being released for execution and handed over to construction management.

- Development of Projects through the concept and definition phases by integrating and interfacing with various project stakeholders on a multi-disciplinary project team.
- Project Management activities across the 9 areas of the project management body of knowledge.
- Project Management of projects being developed or executed which involves:
- Establishing customer requirements and converting it to project requirements.
- Preparation of project contracting strategies and project cost estimates.
- Project management in the design phase of projects.
- Integrating and interfacing with various project stakeholders on a multi-disciplinary project team.
- Development of development and execution schedules.
- Development of concept (feasibility), development (design) and execution (construction) budgets.
- Governance and approval of project SOW, budget and associated schedules.
- Feasibility studies
- Scope definition
- Cost estimation
- Co-ordination of Feasibility studies

6.8 RENEWABLE ENERGY (CSP & PV PLANTS)

- Preparing Cost Estimate letters for Eskom IPPs wanting to connect to the Grid
- Project Development of IPP integration projects for Eskom Group Capital
- Line design (Self build projects) for IPPs integrating into the Eskom Grid
- Substation design (Self build projects) for IPPs integrating into the Eskom Grid
- EIAs

- Project Management
- Technical Support
- Training & Learning

6.9 TRACTION / RAILWAY ENGINEERING

- DC & AC Traction Substation Design & Project Management
- 6,6kV & 11kV Lightning Substation Design & Project Management
- Energy Management Services

6.10 PROJECT EXECUTION MANAGEMENT

- Various Substation and Line project management experience for various projects in execution.
- Integration Management
- Scope Management
- Time Management
- Cost Management
- Quality Management
- Resource Management
- Communication Management
- Risk Management
- Procurement Management

6.11 OTHER SUPPORTING ENGINEERING SERVICES

- Geotechnical Studies
- Platform designs (Experience on various Eskom Substation projects)
- Survey
- SHEQ Services
- Construction Monitoring
- Planning: Outage Management
- Energy Management Services
- Asset Management & Register (*Life Cycle Costing*)

7. TRAINING & LEARNING

Intellipro Consulting is fully committed to contribute to the Supplier Development and Localisation requirements through:

- **Skills development:** Identifying candidates at *Local FETs & University of Technologies within the Regions, where Intellipro Consulting Offices are located*; furthermore develop and establish related skills programs associated with the project delivery.
- **Local Content:** Supporting, developing and utilizing local suppliers (*with focuses on black participation*).
- **Industrialisation:** Supporting the establishment of new competitive industries in the energy sector.
- **Employment and job creation:** Growing Intellipro Consulting into a sustainable business and in combination with skills development create employment opportunities for the new comers in the energy sector. This will resulting in a larger pool of skilled resources by creating experienced resources instead of transferring experienced resources from one company to another.
- **Supplier Development:** Supporting and developing other emerging suppliers. Intellipro Consulting supports sub-contracting or joint ventures with emerging companies.

8. LIST OF PROJECT EXPERIENCE

LIST OF PREVIOUS PROJECTS - ELECTRIFICATION PROJECT DESIGN

PROJECT NAME	DESCRIPTION	CLIENT	CAPITAL VALUE OF PROJECT (Rm)	DISCIPLINE	Completed	CONTACT	ORGAN OF STATE
New electrification design consisting of 122 stands - New Stand Village	Professional Engineering Services- Electrification	Eskom Distribution	R2 M	Electrical	2014	Eskom Distribution Mpho Mulaudzi 015 299 0067	YES
New electrification design consisting of 175 Stands - Shenyaneng Village	Site verification, Design, Technical & Investment evaluations for electrification	Eskom Distribution	R0.2M	Electrical	2016	Eskom Distribution Mpho Mulaudzi 015 299 0067	YES
New electrification design consisting of 595 Stands -Ga Puka Village	Site verification, Design, Technical & Investment evaluations for electrification	Eskom Distribution	R0.5M	Electrical	2016	Eskom Distribution Mpho Mulaudzi 015 299 0067	YES
New electrification design consisting of 534 Stands - Apiesdoring Village	Site verification, Design, Technical & Investment evaluations for electrification	Eskom Distribution	R0.4M	Electrical	2016	Eskom Distribution Mpho Mulaudzi 015 299 0067	YES
New electrification design consisting of 45 Stands - Santeng	Site verification, Design, Technical & Investment evaluations for electrification	Eskom Distribution	R0.1M	Electrical	2015	Eskom Distribution Mpho Mulaudzi 015 299 0067	YES
New electrification design consisting of 515 Stands - Ngove Village	Site verification, Design, Technical & Investment evaluations for electrification	Eskom Distribution	R0.5M	Electrical	2015	Eskom Distribution Mpho Mulaudzi 015 299 0067	YES
New electrification design consisting of 38 stands -Machoana Village	Professional Engineering Services- Electrification	Eskom Distribution	R2 M	Electrical	2014	Eskom Distribution Mpho Mulaudzi 015 299 0068	YES
New electrification design consisting of 185 stands - Shakadza Village	Professional Engineering Services- Electrification	Eskom Distribution	R2 M	Electrical	2014	Eskom Distribution Mpho Mulaudzi 015 299 0069	YES
New electrification design consisting of 70 stands - Moshongo Ext.	Professional Engineering Services- Electrification	Eskom Distribution	R2 M	Electrical	2014	Eskom Distribution Mpho Mulaudzi 015 299 0070	YES
Electrical Services Electrification of Webber Village with 58 Stands	Professional Engineering Services- Electrification	Eskom Distribution	R1 M	Electrical	2013	Eskom Distribution JV Mthimunye 013 693 3343	YES

LIST OF PREVIOUS PROJECTS - OVERHEAD LINE DESIGN

PROJECT NAME	DESCRIPTION	CLIENT	CAPITAL VALUE OF PROJECT (Rm)	DISCIPLINE	Completed	CONTACT	ORGAN OF STATE
Mapoch Blue Ridge 88/11kV – Line Design	Provision of detail design and construction monitoring services for the refurbishment of 30km 88kV O/H line and installation of OPGW.	Eskom Distribution	R30.4 M	Electrical	2014	Eskom Distribution Bones Lubisi 015 299 4449	YES
Matambo-Moatize 66kV line design	Planning, Design, Procurement and Project Management	ABB	R40 M	Electrical	2011	ABB Michiel Strydom 083 381 2056	No
Adams & Pulida IPP's 132kV line designs Platform Substation	Design of the 132kV Line desings Platform Substation	Root 3	R35 M	Electrical	2014	Plantech JD Voigt 012 349 2253	No
Witkop IPP 132kV line 300m	Design of 132kV line from Witkop MTS to adjacent PV Solar Park	ABB	R1.5 M	Electrical	2011	ABB Michiel Strydom 083 381 2056	No
Dikgale 33kV 14km line	Design 14km 33kV line.	Eskom Distribution	R 32.3 M	Electrical	2011	Eskom Distribution Julian Allison 083 4144 4177	YES

LIST OF PREVIOUS PROJECTS - SUBSTATION DESIGN

PROJECT NAME	DESCRIPTION	CLIENT	CAPITAL VALUE OF PROJECT (Rm)	DISCIPLINE	Completed	CONTACT	ORGAN OF STATE
Transalloys Substation Upgrade	Design of the substation upgrade.	Eskom Distribution	R 45 M	Electrical	2012	Eskom Dx Gary Abrahams 012 421 3111	YES
Mathambo Substation Design of extension of existing Substation	Design of the 2x45MVA 220/66kV Matambo Substation Extension.	ABB	R60 M	Electrical	2011	ABB Michiel Strydom 083 381 2055	No
Brits Industries & Rural Cap Banks (40MVar & 30MVar)	Provision of detail design, supply, delivery, erection & commissioning of capacitor bank at Brits Rural substation	Eskom Distribution	R20 M	Electrical	2013	Eskom Distribution Jan le Roux 012 421 3086	YES
Dikgale S/S	Design of Dikgale 2x10MVA substation and 14km 33kV line.	Eskom Distribution	R 32.3 M	Electrical	2011	Eskom Distribution Julian Allison 083 4144 4177	YES
Uitkoms Substation refurbishment	Design of the substation upgrade.	Eskom Distribution	R 23.2 M	Electrical	2010	Eskom Distibution Alex Ndlela 031 710 5422	YES
Koster Substation – Network Upgrade	Design of the new Koster 4x20MVA 88/22&11kV substation.	Eskom Distribution	R 74.2 M	Electrical	2010	Eskom Dx Jan le Roux 012 421 3085	YES

LIST OF PREVIOUS PROJECTS - PROJECT EXECUTION MANAGEMENT

PROJECT NAME	DESCRIPTION	CLIENT	CAPITAL VALUE OF PROJECT (Rm)	DISCIPLINE	Completed	CONTACT	ORGAN OF STATE
New Big Tree 132kV Substation and Fairfield Bigtree 132kV line.	Project Execution Management during construction through to commissioning.	Eskom Distribution	R 29.5 M	Electrical	2010	Eskom Dx Jan le Roux 012 421 3085	YES
Phokeng – Replacement of 11kV indoor Substation switchgear	Provision Of Project Management Services for the replacement and normalisation of the 11kV indoor switchgear at Phokeng 132/11kV Substation.	Eskom Distribution	R10 M	Electrical	Current	Eskom Distribution Jan le Roux 012 421 3085	YES
Mapoch Blue Ridge 88/11kV – Line Design	Provision Of Project Management Services for the refurbishment of 30km 88kV O/H line and installation of OPGW.	Eskom Distribution	R30.4 M	Electrical	2014	Eskom Distribution Bones Lubisi 015 299 4449	YES
Kusile Rail Power Supply – Professional Engineering services	Provision Of Project Management Services for the project engineering and construction of 2x 6MVA 88kV Traction substations.	Eskom Distribution	R70 M	Electrical	Current	Eskom Distribution Jan le Roux 012 421 3086	YES
Dithabaneng Substation (& 9 interdependent projects)	Provision of project management services for the construction of a 132/33/11kV substation, 30km 132kV overhead line, 35km 33kV O/H line and various 11kV feeders.	Eskom Distribution	R135 M	Electrical	2013	Eskom Distribution Julian Allison 015 299 0169	YES
Brits Industries & Rural Cap Banks (40MVar & 30MVar)	Provision of detail design, supply, delivery, erection & commissioning of capacitor bank at Brits Rural substation	Eskom Distribution	R20 M	Electrical	2013	Eskom Distribution Jan le Roux 012 421 3086	YES
Koster Substation – Network Upgrade	Design, project engineering and project management of the new Koster 4x20MVA 88/22&11kV substation.	Eskom Distribution	R 74.2 M	Electrical	2010	Eskom Dx Jan le Roux 012 421 3085	YES
Uitkoms Substation refurbishment	Design, project engineering and project management of the substation upgrade.	Eskom Distribution	R 23.2 M	Electrical	2010	Eskom Distibution Alex Ndlela 031 710 5422	YES

LIST OF PREVIOUS PROJECTS - GEOTECHNICAL STUDIES AND PLATFORM DESIGNS

PROJECT NAME	DESCRIPTION	CLIENT	CAPITAL VALUE OF PROJECT (Rm)	DISCIPLINE	Completed	CONTACT	ORGAN OF STATE
Redhill Substation	Investigation of failing platform and redesign of platform and drainage systems.	Eskom Distribution	R 5 M	Electrical	2013	Eskom Distribution Frans Wahl 012 4213327	YES
Dikgale Substation	Geotechnical investigation and 2x10MVA 33/11kV substation platform design.	Eskom Distribution	R 0.3 M	Electrical	2013	Eskom Distribution Frans Wahl 012 4213327	YES
Veepaas Substation	Geotechnical investigation platform storm water drainage design	Eskom Distribution	R 0.3 M	Electrical	2013	Eskom Distribution Frans Wahl 012 4213327	YES
Mataffin Substation	Geotechnical investigation, platform storm water drainage design.	Eskom Distribution	R 0.3 M	Electrical	2013	Eskom Distribution Frans Wahl 012 4213327	YES
Mathambo Substation	Platform design	ABB	R0.3 M	Electrical	2009	ABB Michiel Strydom 083 381 2054	No
Dithabaneng-Middelpunt 132kV line	Geotechnical investigation for 30km 132kV line.	Eskom Distribution	R 0.3 M	Electrical	2013	Eskom Distribution Frans Wahl 012 4213327	YES
Thulamela Substation	Geotechnical investigation, platform storm water drainage design. Project Development up to execution phase	Eskom Distribution	R 0.3 M	Electrical	2013	Eskom Distribution Frans Wahl 012 4213327	YES
Adam & Pulida Platform Design	Geotechnical investigation, platform & storm water drainage design	Plantech	R 0.3 M	Electrical	2014	Plantech JD Voigt 012 349 2253	No
Dithabaneng Substation	Geotechnical investigation, platform & storm water drainage design	Eskom Distribution	R 0.3 M	Electrical	2013	Eskom Distribution Frans Wahl 012 4213327	YES
Witkop Substation	Design Geotechnical investigation, platform storm water drainage design. Project Development up to execution phase.	ABB	R0.3 M	Electrical	2011	ABB Michiel Strydom 083 381 2054	No

LIST OF PREVIOUS PROJECTS - PROJECT DEVELOPMENT

PROJECT NAME	DESCRIPTION	CLIENT	CAPITAL VALUE OF PROJECT (Rm)	DISCIPLINE	Completed	CONTACT	ORGAN OF STATE
Kimberly Strengthening Phase 2	Project Development and Project Management of the scope definition and design phases and cost estimation.	Eskom Transmission	R 1 455 M	Electrical	Current	Eskom Transmission Albert van der Walt 011 800 3889	YES
Kimberley Strengthening Phase 3: Hotazel 400kV loop-in and 2x500MVA 400/132kV substation	Project Development and Project Management of the scope definition and design phases and cost estimation.	Eskom Transmission	R 486 M	Electrical	Current	Eskom Transmission Albert van der Walt 011 800 3889	YES
Vryburg 400/132kV Substation	Project Development and Project Management of the scope definition and design phases and cost estimation.	Eskom Transmission	R 400 M	Electrical	Current	Eskom Transmission Albert van der Walt 011 800 3890	YES
Ngwedi 400/132kV 2 x 500MVA MTS	Project Development and Project Management of the scope definition and design phases and cost estimation.	Eskom Transmission	R 700 M	Electrical	Current	Eskom Transmission Albert van der Walt 011 800 3891	YES
Aries - Nieuwehoop 400kV line	Project Development and Project Management of the scope definition and design phases and cost estimation.	Eskom Transmission	R 642 M	Electrical	Current	Eskom Transmission Albert van der Walt 011 800 3892	YES
Borutho 400/132kV 2 x 500MVA substation	Project Development and Project Management of the scope definition and design phases and cost estimation.	Eskom Transmission	R 640 M	Electrical	Current	Eskom Transmission Albert van der Walt 011 800 3893	YES
Medupi Transmission Integration	Project Development and Project Management of the scope definition and design phases and cost estimation.	Eskom Transmission	R 9 800 M	Electrical	Current	Eskom Transmission Albert van der Walt 011 800 3894	YES
Ngwedi 400/132kV 2 x 500MVA substation	Project Development up to execution phase	Eskom Transmission	R613.03 M	Electrical	2013	Eskom Transmission Albert van der Walt 011 800 3895	YES
Mitchells Plain MTS	Project Development up to execution phase	Eskom Transmission	R1 165.17 M	Electrical	Current	Eskom Transmission Albert van der Walt 011 800 3896	YES

LIST OF PREVIOUS PROJECTS - PROJECT DEVELOPMENT

PROJECT NAME	DESCRIPTION	CLIENT	CAPITAL VALUE OF PROJECT (Rm)	DISCIPLINE	Completed	CONTACT	ORGAN OF STATE
Firgrove New MTS	Project Development up to execution phase	Eskom Transmission	R484.38 M	Electrical	2014	Eskom Transmission Albert van der Walt 011 800 3897	YES
Blanco Integration; Narina MTS	Project Development up to execution phase	Eskom Transmission	R776.71 M	Electrical	Current	Eskom Transmission Albert van der Walt 011 800 3900	YES
Houhoek Integration: Asteria MTS and lines	Project Development up to execution phase	Eskom Transmission	R566.14 M	Electrical	Current	Eskom Transmission Albert van der Walt 011 800 3901	YES
Ankerlig - Sterrekus 400kV line	Project Development up to execution phase	Eskom Transmission	R213.86 M	Electrical	Current	Eskom Transmission Albert van der Walt 011 800 3902	YES
Vryheid 400/132kV Substation (1st and 2nd 250MVA transformers)	Project Development up to execution phase	Eskom Transmission	R430.72 M	Electrical	Current	Eskom Transmission Albert van der Walt 011 800 3911	YES
Replacement of under-insulated equipment in Transmission - Koeberg Substation	Project Development up to execution phase	Eskom Transmission	R18.16 M	Electrical	2013	Eskom Transmission Albert van der Walt 011 800 3913	YES
Cape Corridor 2nd 765kV line from Standardton to Cape Town.	Project Development up to execution phase	Eskom Transmission	R38 000 M	Electrical	Current	Eskom Transmission Albert van der Walt 011 800 3917	YES
Tshwane Strengthening; Verwoerdburg Substation	Project Development up to execution phase	Eskom Transmission	R548 M	Electrical	Current	Eskom Transmission Albert van der Walt 011 800 3917	YES
Nuclear 1 (Thyspunt, Bantamsklip and Duynefontein) Transmission Integration	Project Development up to execution phase	Eskom Transmission	R8 215 M	Electrical	Current	Eskom Transmission Albert van der Walt 011 800 3917	YES

LIST OF PREVIOUS PROJECTS - PROJECT DEVELOPMENT

PROJECT NAME	DESCRIPTION	CLIENT	CAPITAL VALUE OF PROJECT (Rm)	DISCIPLINE	Completed	CONTACT	ORGAN OF STATE
Waterberg Stability Enhancement Project	Project Development up to execution phase	Eskom Transmission	R1 784 M	Electrical	Current	Eskom Transmission Albert van der Walt 011 800 3917	YES
Various IPP Projects (Integration into the Eskom Grid)	Project Development up to execution phase	Eskom Transmission	R500 M	Electrical	Current	Eskom Transmission Albert van der Walt 011 800 3917	YES